

New ideas for interior design

SELF-ADHESIVE FURNITURE FILM

 **INTERIE**
Interior Materials



 **easySTYLE.**
by NESCHEN





Keep up with shorter advertising cycles, changing interior trends or seasonal promotions with easySTYLE. easySTYLE is a fast and cost-efficient solution for many applications in interior or store design.

From woodgrain to marble – discover the creative possibilities of easySTYLE. Almost any furniture surface can be transformed into a whole new look.

easySTYLE self-adhesive films are respectful to the environment by meeting the highest sustainability standards.

ADVANTAGES

- Fast and easy application
- PVC-free, paper-based surface
- No shrinkage
- Scratch-resistant
- Cost- and time-efficient
- Easy removal without residue

TECHNICAL FACTS

- Required temperature range for processing: 5 °C to 40 °C
- Chemical resistance: easySTYLE is certified according to DIN68861, 1B to 1D
- Lightfastness: at least 6 on the international wool scale according to DIN EN ISO 105-B02

| | 10 m × 124 cm | 25 m × 124 cm | Surface |
|-----------------------|---------------|---------------|-----------------------|
| Anthracite Super Matt | 6044263 | 6044223 | Matt |
| Ashton | 6044258 | 6044218 | Haptic |
| Canyon | 6044255 | 6044215 | Haptic |
| Caspio | 6044253 | 6044212 | Haptic |
| Catania Oak | 6044252 | 6044211 | Haptic |
| Haitabu | 6044257 | 6044217 | Haptic |
| Kiruna | 6044262 | 6044222 | Haptic |
| Meton Concrete | 6044261 | 6044221 | Satin finish |
| Meton Copper | 6044260 | 6044220 | Satin finish metallic |
| Meton Gold | 6044259 | 6044219 | Satin finish metallic |
| Rovere Gessato | 6044256 | 6044216 | Haptic |
| Sonoma Oak | 6044254 | 6044214 | Haptic |
| Whiteboard | 6044248 | 6044208 | High gloss |
| White High Gloss | 6044250 | 6044209 | High gloss |
| White Super Matt | 6044251 | 6044210 | Matt |

OVERVIEW



Anthracite Super Matt



Ashton



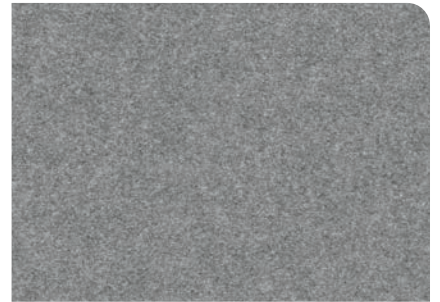
Canyon



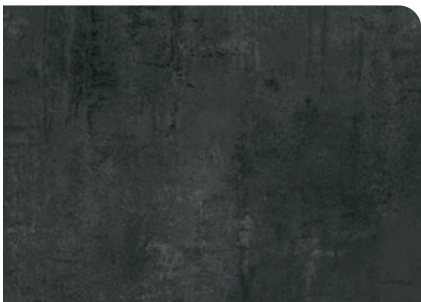
Caspio



Catania Oak



Haitabu



Kiruna



Meton Concrete



Meton Copper



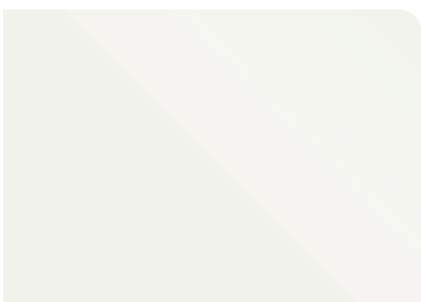
Meton Gold



Rovere Gessato



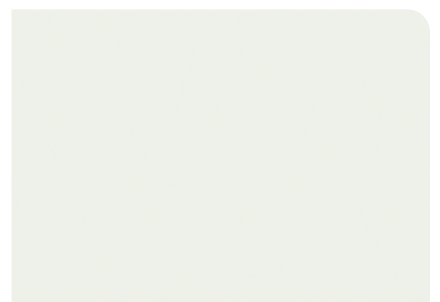
Sonoma Oak



Whiteboard



White High Gloss



White Super Matt

CHARACTERISTICS

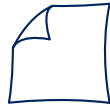
easySTYLE is a paper-based self-adhesive film with a variety of decorative styles. easySTYLE creates high-quality results with minimal effort.



Structured surface



Bubble-free application



Removable without residue



Environmentally friendly



Furniture standard



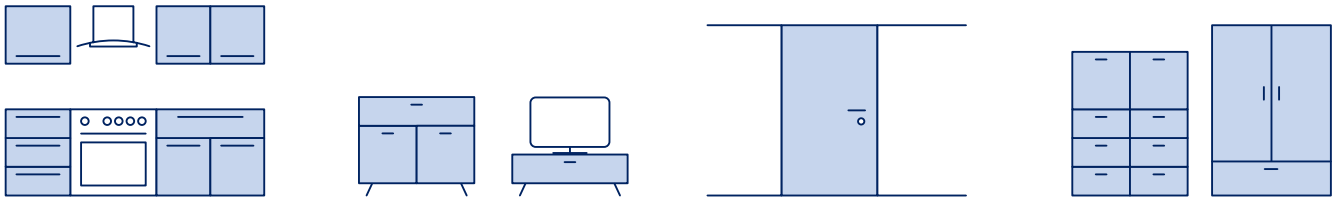
Paper-based



Shrink-proof

APPLICATIONS

easySTYLE has been developed for fast and easy applications on furniture and can be applied to almost all flat and smooth surfaces.



SUBSTRATES

Plywood and MDF boards (preferably pre-coated), solid wood, plastics, metal and lacquered surfaces.

AVAILABLE SIZES

easySTYLE is available in two roll sizes: 10 m x 124 cm (ideal as sample size) and 25 m x 124 cm.

PROCESSING

Before applying easySTYLE, all surfaces should be cleaned properly. Best results can be achieved on a smooth, dry, fat-free and dust-free surface.

easySTYLE offers a revolutionary air channel technology, which allows an effortless application and the ability to easily remove any trapped air, guaranteeing a bubble-free finish. easySTYLE is also repositionable and can, therefore, be applied and corrected several times without tearing or wrinkling.

Place easySTYLE on the application surface and cut to the desired size. For small areas, remove the film completely from its liner, place it on the surface and push any air bubbles to the edges. When working on large areas, we recommend that you peel back 10 – 15 cm of the release liner, apply the film to the edge of the surface, and then slowly peel back the liner while smoothing the film with a soft plastic squeegee. Remove trapped air by pushing it from the center to the edges with the squeegee. Excess material can be removed with a cutter.

The film offers residue-free removal from almost all surfaces, thereby restoring the look of the original piece. The ideal application temperature is 15 °C to 25 °C.

easy**STYLE**
a brand of

Neschen Coating GmbH
Hans-Neschen-Str. 1
31675 Bückebug
Germany

T +49 5722 207-0
F +49 5722 207-197
E info@neschen.de

www.neschen.com

 **INTERIE**
Interior Materials

 **easySTYLE.**
by NESCHEN

