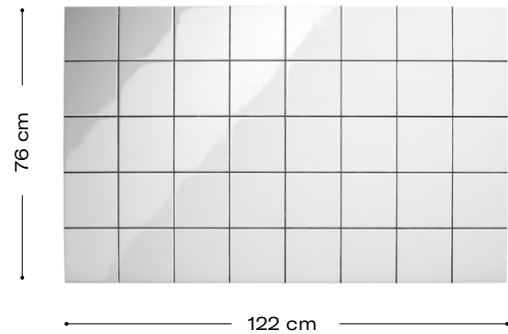


Square Tile

Product description

The Square Tile decorative panel is the representation of a simple material that provides luminosity, cleanliness and reflection. It is a perfect alternative for quickly creating elegant and discreet spaces.



Technical characteristics

Weight:
8,8 Kg

Thickness:
18mm

Maintenance:

If necessary, clean with water or a non-irritating or non-corrosive cleaner.

Waterproof



Impact resistance



Product features



Lightweight



Non-flammable



Strong



Non-toxic



Simple and quick



No building works are required



Recyclable



Sustainable

Certificates



Thermal insulation certificate
carried out by Tecnalia



Fireproof certificate B-s1-d0
carried out by Aitex



Fireproof certificate according to the Russian normative
carried out by Zentrum



Reduced Carbon Footprint

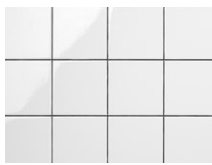


CE Mark

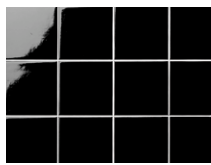


ISO 14001

Decorations and finishing options



PX-176 9003
Square Tile



PX-176 9005
Square Tile