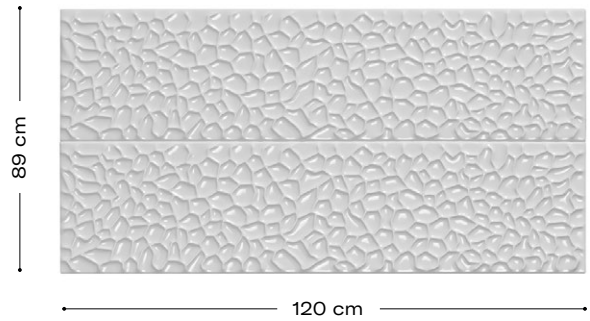


# Sinkiang

## Product description

The Panespol Sinkiang decorative panel creates bold, modern and different environments. This wall covering is based on a rhythmic geometry that leaves no one indifferent. In addition, the colour range in which the material is manufactured spans from white to black covering the entire RAL colour spectrum, so when you create, the only limit is your imagination.



## Technical characteristics

**Weight:**  
5,6 Kg

**Thickness:**  
17mm - 20mm

### Maintenance:

If necessary, clean with water or a non-irritating or non-corrosive cleaner.

**Waterproof**



**Impact resistance**



## Product features



Lightweight



Non-flammable



Strong



Non-toxic



Simple and quick



No building works are required



Recyclable



Sustainable



## Certificates



**Thermal insulation certificate**  
carried out by Tecnalia



**Fireproof certificate B-s1-d0**  
carried out by Aitex



**Fireproof certificate according to the Russian normative**  
carried out by Zentrum



Reduced Carbon Footprint

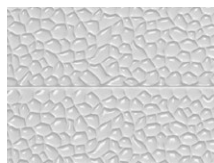


CE Mark



ISO 14001

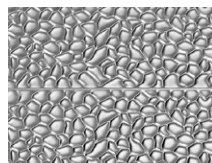
## Decorations and finishing options



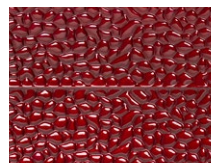
**T-034 9016**  
Sinkiang



**T-034 ORO**  
Sinkiang



**T-034 PLATA**  
Sinkiang



**T-034 ROJO**  
Sinkiang



**T-034 VERDE**  
Sinkiang