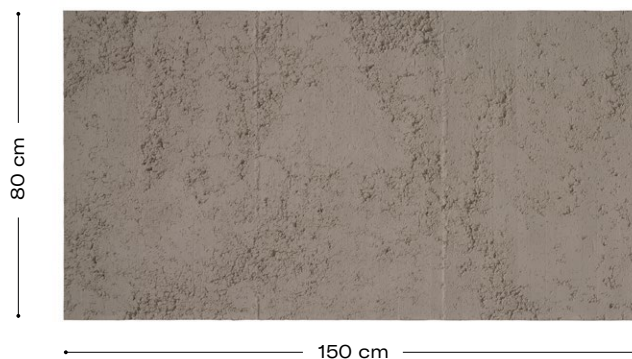


# Rough Beton

## Product description

Trowelled concrete has a rough finish and is appropriate for areas where good grip is an important factor to take into account. However, innovation and exclusivity can also be achieved with this texture by applying it on a wall, as with Panespol Rough Beton decorative panels.



## Technical characteristics

**Weight:**  
6,8 Kg

**Thickness:**  
10mm - 12mm

### Maintenance:

If necessary, clean with water or a non-irritating or non-corrosive cleaner.

**Waterproof**



**Impact resistance**



## Product features



Lightweight



Non-flammable



Strong



Non-toxic



Simple and quick



No building works are required



Recyclable



Sustainable

## Certificates



**Thermal insulation certificate**  
carried out by Tecnalia



**Fireproof certificate B-s1-d0**  
carried out by Aitex



**Fireproof certificate according to the Russian normative**  
carried out by Zentrum



Reduced Carbon Footprint



CE Mark



ISO 14001

## Decorations and finishing options



**TX-019**  
Rough Beton



**TX-019 2502**  
Rough Beton



**TX-037**  
Rough Beton  
Envejecido