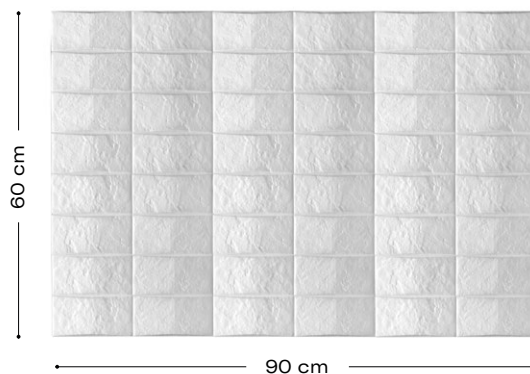


Kashi

Product description

Achieving symmetry, shine and distinction using small squares with a texture that evokes luxury is a simple task thanks to the Panespol Kashi decorative panel. In addition, this panel is offered in any RAL colour that allows multiple combinations.



Technical characteristics

Weight:
3,5 Kg

Thickness:
10mm - 12mm

Maintenance:

If necessary, clean with water or a non-irritating or non-corrosive cleaner.

Waterproof



Impact resistance



Product features



Lightweight



Non-flammable



Strong



Non-toxic



Simple and quick



No building works are required



Recyclable



Sustainable



Certificates



Thermal insulation certificate
carried out by Tecnalia



Fireproof certificate B-s1-d0
carried out by Aitex



Fireproof certificate according to the Russian normative
carried out by Zentrum



Reduced Carbon Footprint

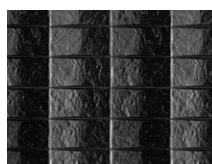


CE Mark

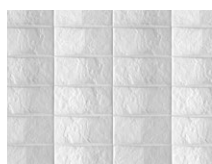


ISO 14001

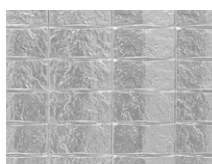
Decorations and finishing options



TX-025 9005
Kashi



TX-025 9016
Kashi



TX-025 PLATA
Kashi



TX-025 ORO
Kashi



TX-025 BRONCE
Kashi