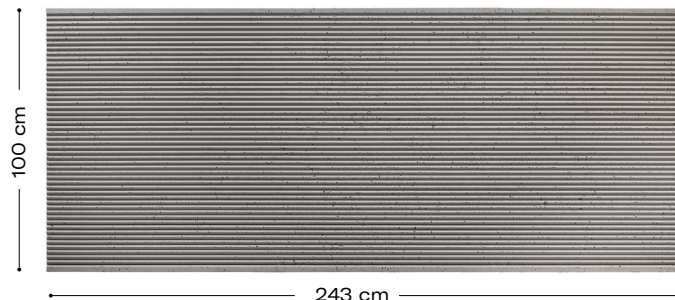


Product description

Perfectly imperfect. The Crest model imitates exposed concrete and turns any space into a visual reference of urban and contemporary style thanks to its triangular waves. A popular resource in architecture and civil construction, nowadays it is already a reference in interior design projects.



Technical characteristics

Weight:
12'8 Kg

Thickness:
10mm - 20mm

Maintenance:

If necessary, clean with water or a non-irritating or non-corrosive cleaner.

Waterproof



Impact resistance



Product features



Lightweight



Non-flammable



Strong



Non-toxic



Simple and quick



No building works are required



Recyclable



Sustainable

Certificates



Thermal insulation certificate
carried out by Tecnalia



Fireproof certificate B-s1-d0
carried out by Aitex



Fireproof certificate according to the Russian normative
carried out by Zentrum



Reduced Carbon Footprint



CE Mark

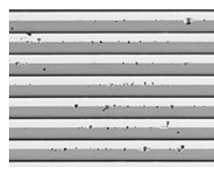


ISO 14001

Decorations and finishing options



TX-072 7044
Crest



TX-072 9016
Crest

Measures

